



DIRECT DRIVE BLOWERS

DDC SERIES - STEEL WHEEL
DDG SERIES - PLASTIC WHEEL

DIRECT DRIVE BLOWERS

CONTENTS

INTRODUCTION	3
HOW TO SELECT	3
203mm x 203mm	4 - 5
DDG203-203-060, standard housing	4
DDG203-203-481, standard housing	5
241mm x 181mm	6 - 14
DDC241-181-200, standard housing	6
DDG241-181-200, tight housing	7
DDC241T181-200, tight housing	8
DDG241T181-200, tight housing	9
DDC241-181-202, standard housing	10
DDG241-181-202, standard housing	11
DDC241T181-202, tight housing	12
DDG241T181-202, tight housing	13
DDC241T181-204, tight housing	14
241mm x 241mm	15 - 23
DDC241-241-200, standard housing	15
DDG241-241-200, standard housing	16
DDC241T241-200, tight housing	17
DDG241T241-200, tight housing	18
DDC241-241-202, standard housing	19
DDC241-241-300, standard housing	20
DDG241-241-300, standard housing	21
DDC241T241-300, tight housing	22
DDG241T241-300, tight housing	23
270mm x 270mm	24 - 27
DDC270-270-300, standard housing	24
DDG270-270-300, standard housing	25
DDC270-270-360, standard housing	26
DDG270-270-360, standard housing	27

INTRODUCTION

DESCRIPTION

This type of blower unit is direct drive with a forward curve wheel, mounted directly to the motor shaft. Double inlet allows it to draw air in from both sides of the unit, cooling the motor in the process, the motor is mounted in the airflow on one side of the unit.

The direct drive blowers can have either a 'C' or 'G' type wheel depending on the size of the unit.

DDC product styles use the 'C' type wheels. They have individual blades that use a centre disc locking arrangement, for the 241mm or 270mm diameters.

DDG product styles use the 'G' type wheels. These are a plastic wheel, available in the 82mm diameter or the larger 203mm, 241mm and 270mm diameter.

A range of motors are available to cover airflows up to 1300 l/sec.

The larger direct drive blowers are equipped with either 4 or 6 pole, 3 speed motors. Where applicable an appropriate size capacitor is fitted to give the desired performance. All motors have thermal overload protection and insulation that conforms to class B requirements.

All performance testing of blower assemblies is carried out on an airflow test rig designed to BS848 specifications which detail performance testing using standardized airways.

Standard tests are carried out in a non-ducted discharge or Type 'A' installation.

PART NUMBER IDENTIFICATION

When placing an order, the blower product code should be specified. The product code of the blower is composed in accordance with the following example:

D	D	C	2	4	1	-	1	8	1	-	2	0	0
1	2	3	4 - 6				7	8 - 10			11-13		14

POSITION 1

Type of drive

D = Direct

POSITION 2

Configuration

D = Double inlet

POSITION 3

Wheel type

C = Steel

G = Plastic polypropylene

POSITIONS 4 TO 6

Wheel diameter

In millimeters

POSITION 7

Housing

DASH = Standard housing

T = Tight housing

POSITIONS 8 TO 10

Wheel width

In millimeters

POSITIONS 11 TO 13

Wheel rotation

ODD NUMBERS = Clockwise rotation

EVEN NUMBERS = Anti-clockwise rotation

View rotation from drive side

POSITION 14

Capacitor

BLANK = Fixed value capacitor supplied

Code examples:

DDC241T181-200

DDG241-181-200

DIRECT DRIVE BLOWERS

203MM DIAMETER • 203MM WIDTH

HOUSING

G2 Galvabond®* Steel Z275

MOTOR

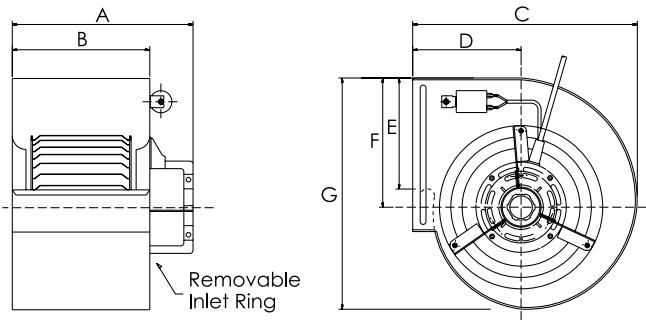
240 volts, 50HZ
 1ph C.S.R
 Class B Insulation
 Automatic Thermal Overload Protection

WHEEL

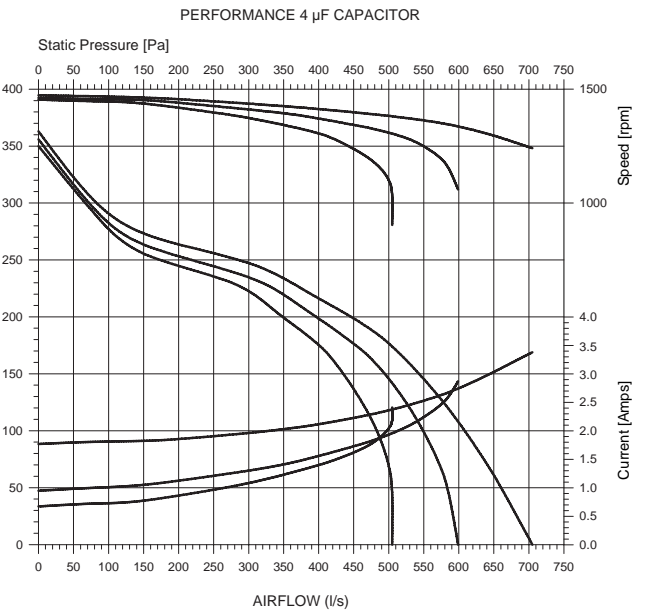
Polypropylene

DIMENSIONS

	A	B	C	D	E	F	G
DDG203-203-060	457	248	306	152	160	183	319



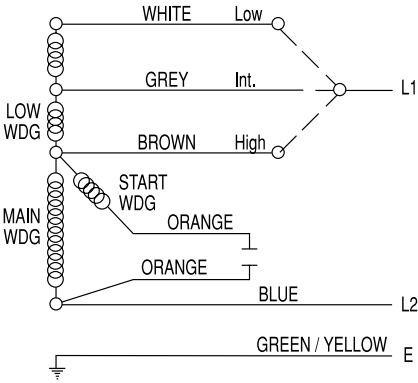
PERFORMANCE GRAPH



Motor	808555NVA-A11
Poles	4
Speeds	3
Watts Out	315
Bearings	Ball
Venting	Fully
Main Lead	1300
Connectors	B and E on earth
Capacitor Size	4 MFD
Capacitor Lead	1300
Connectors	F
Weight (kg)	9.5
Housing Support Brackets	None

B: Bootlace
 E: Eyelet
 F: Flag Terminals with Insulators

WIRING DIAGRAM



DIRECT DRIVE BLOWERS

203MM DIAMETER • 203MM WIDTH

HOUSING

G2 Galvabond®* Steel Z275

MOTOR

240 volts, 50HZ

1ph C.S.R

Class B Insulation

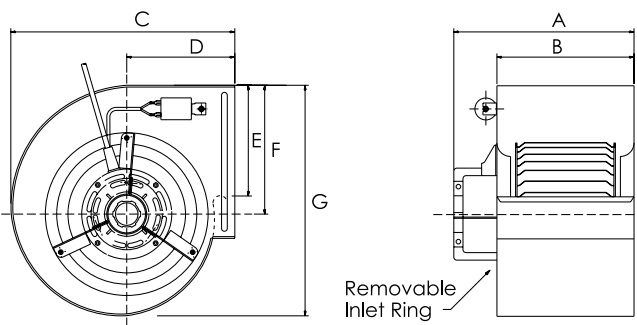
Automatic Thermal Overload Protection

WHEEL

Polypropylene

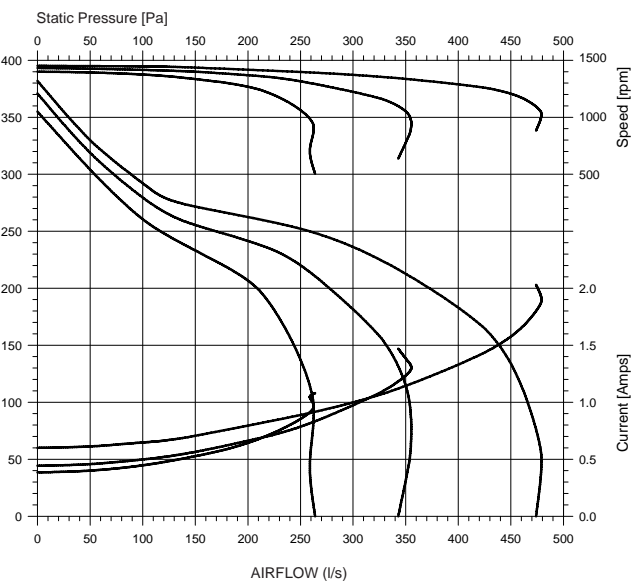
DIMENSIONS

	A	B	C	D	E	F	G
DDG203-203-481	375	248	306	152	160	183	319



PERFORMANCE GRAPH

PERFORMANCE 4 μ F CAPACITOR



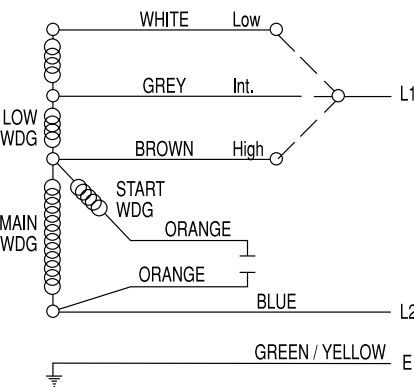
Motor	40P5134-180SC
Poles	4
Speeds	3
Watts Out	180
Bearings	Ball
Venting	Endshields
Main Lead	1000
Connectors	B and E on earth
Capacitor Size	4 MFD
Connectors	None
Weight (kg)	8.0
Housing Support Brackets	None

B: Bootlace

E: Eyelet

F: Flag Terminals with Insulators

WIRING DIAGRAM



DIRECT DRIVE BLOWERS

241MM DIAMETER • 181MM WIDTH

HOUSING

G2 Galvabond®* Steel Z275

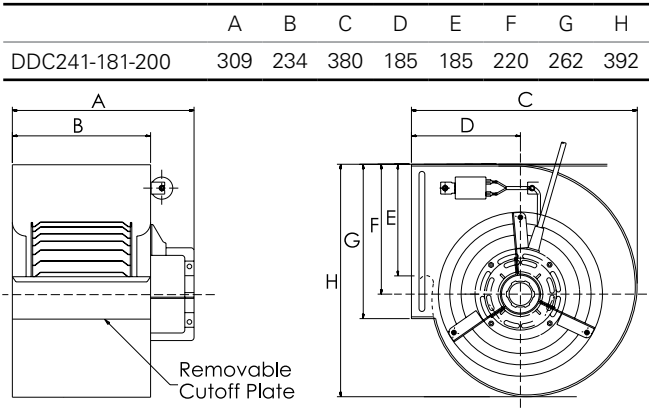
MOTOR

240 volts, 50Hz, 1ph C.S.R.
 Class B Insulation
 Automatic Thermal Overload Protection

WHEEL

Steel

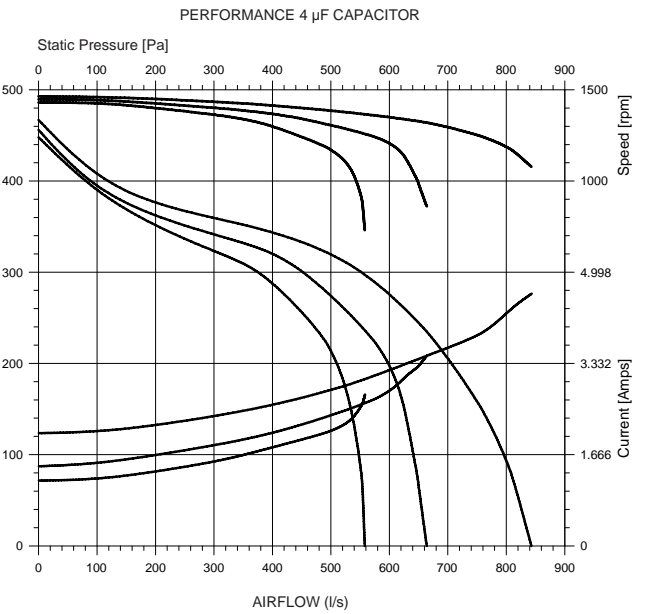
DIMENSIONS



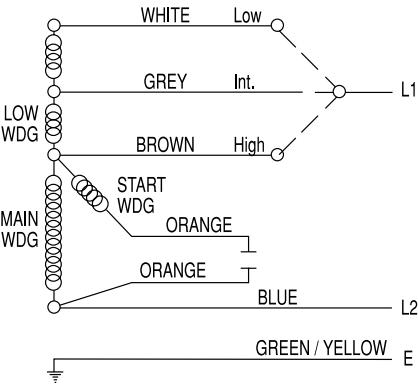
Motor	808555NVA-A11
Poles	4
Speeds	3
Watts Out	425
Bearings	Ball
Venting	Fully
Main Lead	1300
Connectors	B and E on earth
Capacitor Size	10 MFD
Capacitor Lead	1300
Connectors	F
Weight (kg)	12.0
Housing Support Brackets	KH054-241

B: Bootlace
 E: Eyelet
 F: Flag Terminals with Insulators

PERFORMANCE GRAPH



WIRING DIAGRAM



DIRECT DRIVE BLOWERS

241MM DIAMETER • 181MM WIDTH

HOUSING

G2 Galvabond®* Steel Z275

MOTOR

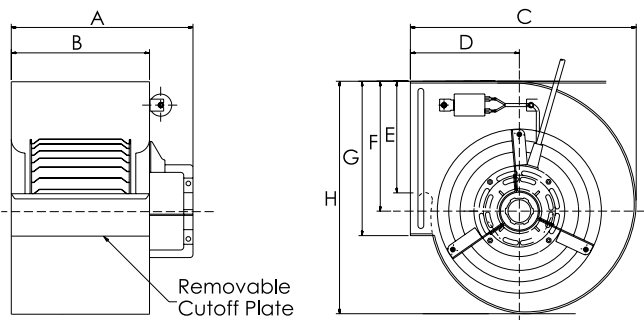
240 volts, 50Hz, 1ph C.S.R.
Class B Insulation
Automatic Thermal Overload Protection

WHEEL

Polypropylene

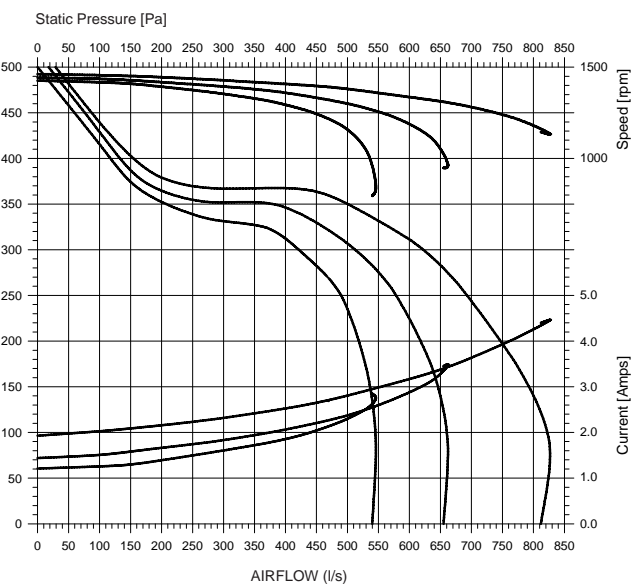
DIMENSIONS

	A	B	C	D	E	F	G	H
DDG241-181-200	309	234	380	185	185	220	262	392



PERFORMANCE GRAPH

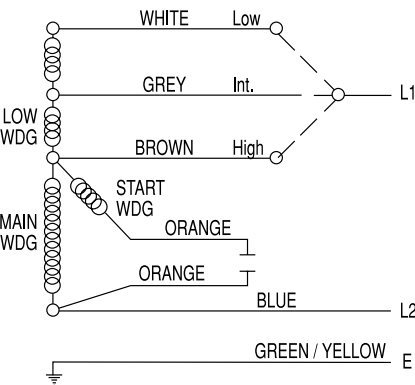
PERFORMANCE 4 µF CAPACITOR



Motor	808555NVA-A11
Poles	4
Speeds	3
Watts Out	425
Bearings	Ball
Venting	Fully
Main Lead	1300
Connectors	B and E on earth
Capacitor Size	10 MFD
Capacitor Lead	1300
Connectors	F
Weight (kg)	12.0
Housing Support Brackets	KH054-241

B: Bootlace
E: Eyelet
F: Flag Terminals with Insulators

WIRING DIAGRAM



DIRECT DRIVE BLOWERS

241MM DIAMETER • 181MM WIDTH, TIGHT HOUSING

HOUSING

G2 Galvabond®* Steel Z275

MOTOR

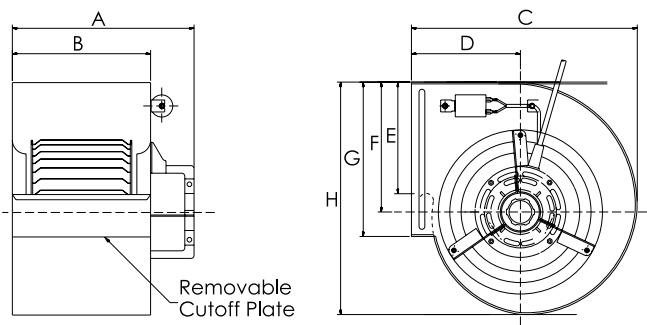
240 volts, 50Hz, 1ph C.S.R.
 Class B Insulation
 Automatic Thermal Overload Protection

WHEEL

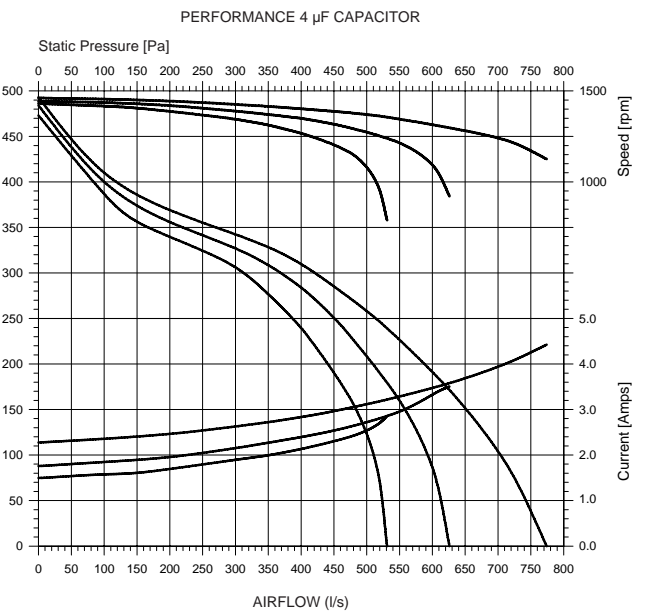
Steel

DIMENSIONS

	A	B	C	D	E	F	G	H
DDC241T181-200	309	234	325	160	160	186	262	327



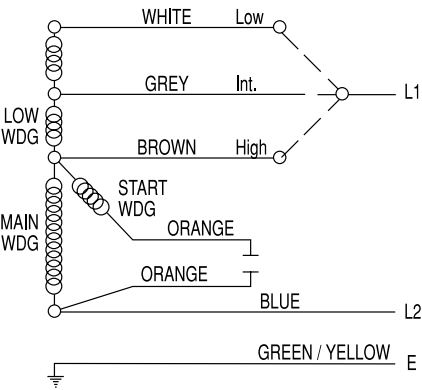
PERFORMANCE GRAPH



Motor	808555NVA-A11
Poles	4
Speeds	3
Watts Out	425
Bearings	Ball
Venting	Fully
Main Lead	1300
Connectors	B and E on earth
Capacitor Size	10 MFD
Capacitor Lead	1300
Connectors	F
Weight (kg)	11.0
Housing Support Brackets	KH054-241

B: Bootlace
 E: Eyelet
 F: Flag Terminals with Insulators

WIRING DIAGRAM



DIRECT DRIVE BLOWERS

241MM DIAMETER • 181MM WIDTH, TIGHT HOUSING

HOUSING

G2 Galvabond®* Steel Z275

MOTOR

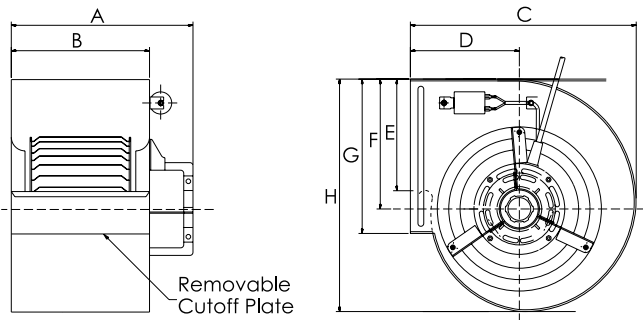
240 volts, 50Hz, 1ph C.S.R.
Class B Insulation
Automatic Thermal Overload Protection

WHEEL

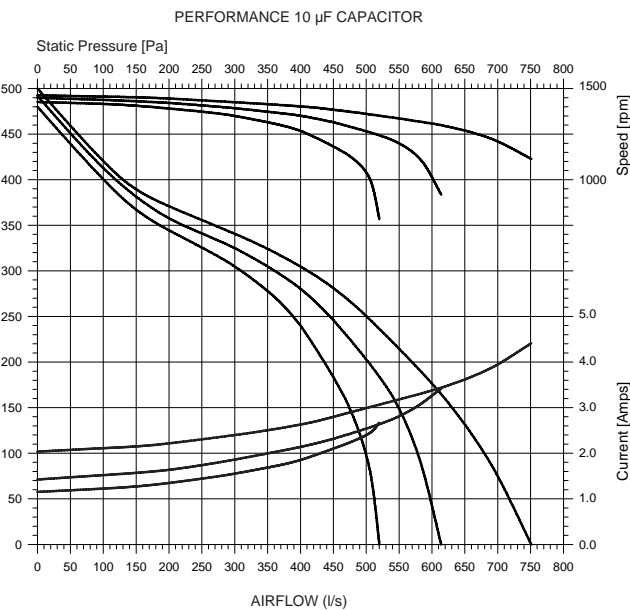
Polypropylene

DIMENSIONS

	A	B	C	D	E	F	G	H
DDG241T181-200	309	234	325	160	160	186	262	327



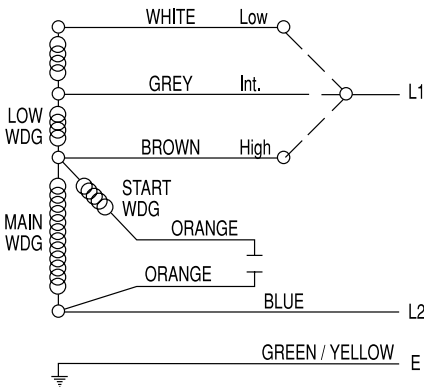
PERFORMANCE GRAPH



Motor	808555NVA-A11
Poles	4
Speeds	3
Watts Out	425
Bearings	Ball
Venting	Fully
Main Lead	1300
Connectors	B and E on earth
Capacitor Size	10 MFD
Capacitor Lead	1300
Connectors	F
Weight (kg)	11.0
Housing Support Brackets	KH054-241

B: Bootlace
E: Eyelet
F: Flag Terminals with Insulators

WIRING DIAGRAM



DIRECT DRIVE BLOWERS

241MM DIAMETER • 181MM WIDTH

HOUSING

G2 Galvabond®* Steel Z275

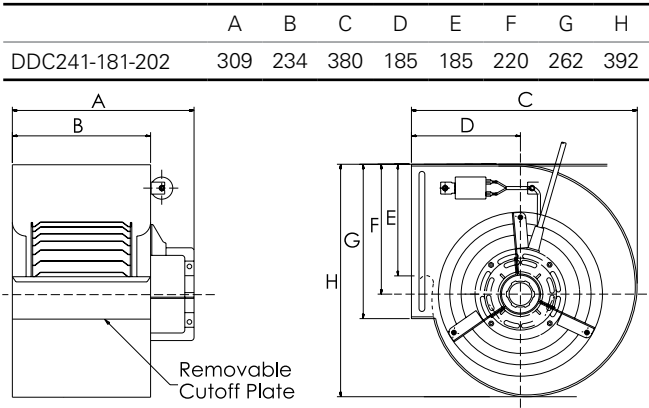
MOTOR

240 volts, 50Hz, 1ph C.S.R.
 Class B Insulation
 Automatic Thermal Overload Protection

WHEEL

Steel

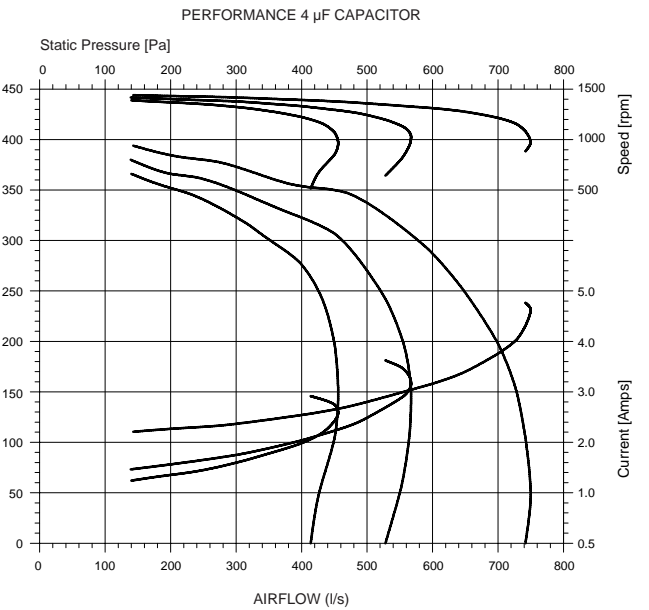
DIMENSIONS



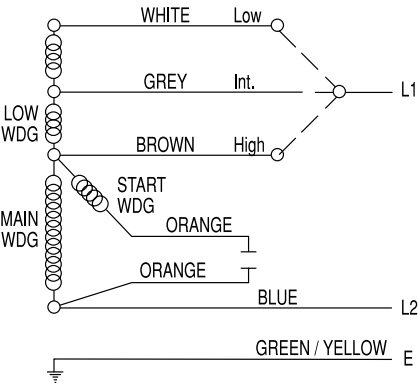
Motor	808555NVA-A11
Poles	4
Speeds	3
Watts Out	315
Bearings	Ball
Venting	Fully
Main Lead	1300
Connectors	B and E on earth
Capacitor Size	4 MFD
Capacitor Lead	1300
Connectors	F
Weight (kg)	12.0
Housing Support Brackets	KH054-241

B: Bootlace
 E: Eyelet
 F: Flag Terminals with Insulators

PERFORMANCE GRAPH



WIRING DIAGRAM



DIRECT DRIVE BLOWERS

241MM DIAMETER • 181MM WIDTH

HOUSING

G2 Galvabond®* Steel Z275

MOTOR

240 volts, 50Hz, 1ph C.S.R.

Class B Insulation

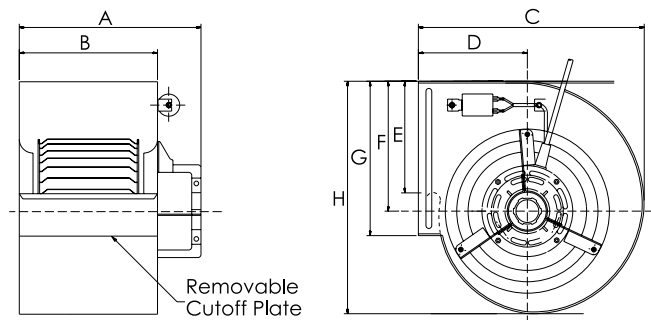
Automatic Thermal Overload Protection

WHEEL

Polypropylene

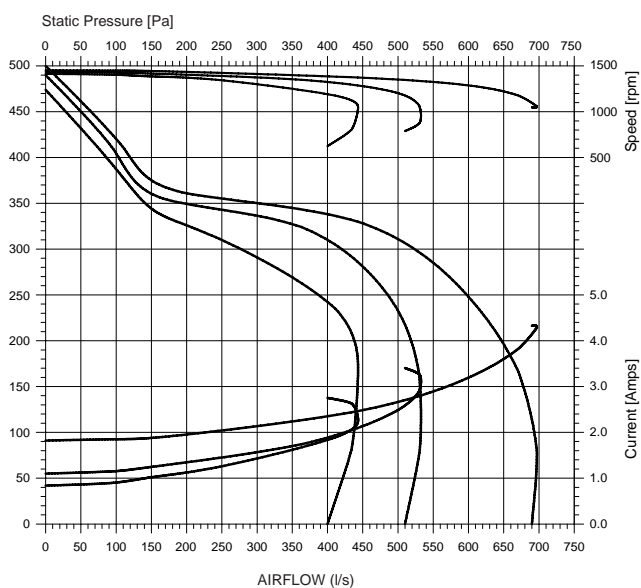
DIMENSIONS

	A	B	C	D	E	F	G	H
DDG241-181-202	309	234	380	185	185	220	262	392



PERFORMANCE GRAPH

PERFORMANCE 4 μ F CAPACITOR



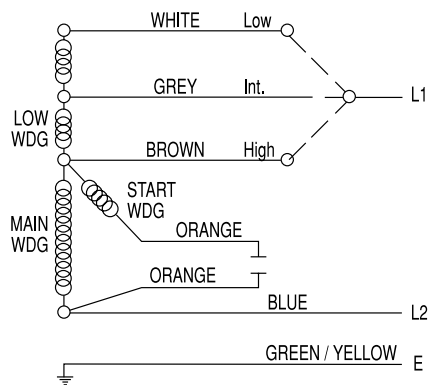
Motor	808555NVA-A11
Poles	4
Speeds	3
Watts Out	315
Bearings	Ball
Venting	Fully
Main Lead	1300
Connectors	B and E on earth
Capacitor Size	4 MFD
Capacitor Lead	1300
Connectors	F
Weight (kg)	12.0
Housing Support Brackets	KH054-241

B: Bootlace

E: Eyelet

F: Flag Terminals with Insulators

WIRING DIAGRAM



DIRECT DRIVE BLOWERS

241MM DIAMETER • 181MM WIDTH, TIGHT HOUSING

HOUSING

G2 Galvabond®* Steel Z275

MOTOR

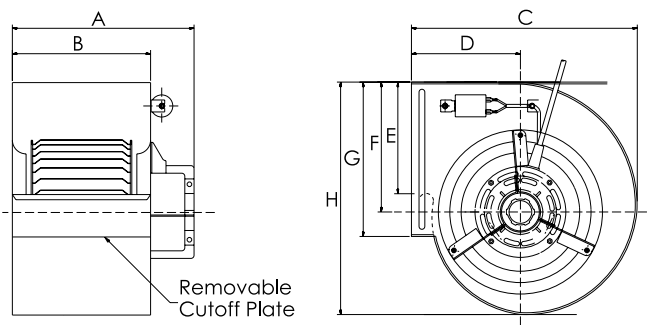
240 volts, 50Hz, 1ph C.S.R.
 Class B Insulation
 Automatic Thermal Overload Protection

WHEEL

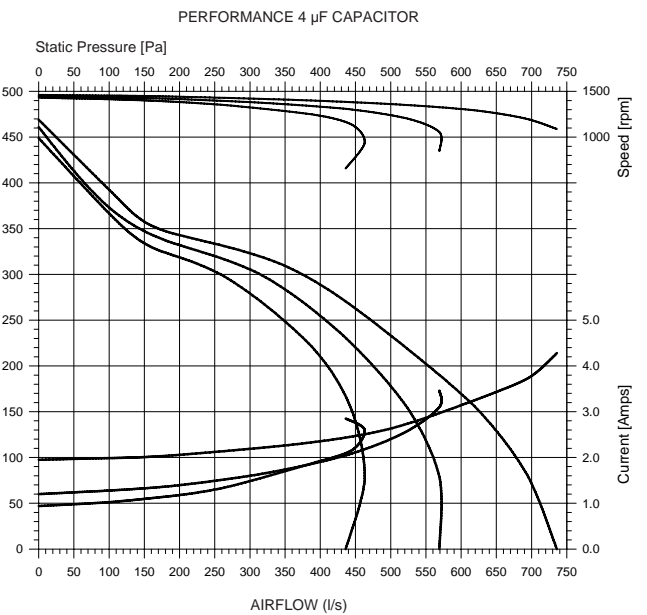
Steel

DIMENSIONS

	A	B	C	D	E	F	G	H
DDC241T181-202	309	234	325	160	160	186	262	327



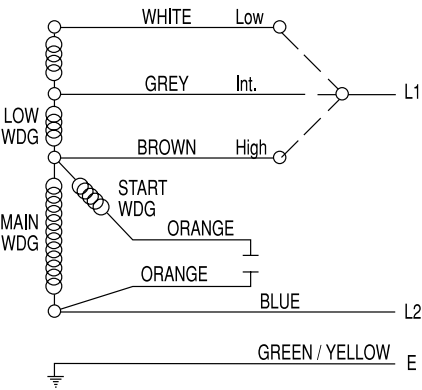
PERFORMANCE GRAPH



Motor	808555NVA-A11
Poles	4
Speeds	3
Watts Out	315
Bearings	Ball
Venting	Fully
Main Lead	1300
Connectors	B and E on earth
Capacitor Size	4 MFD
Capacitor Lead	1300
Connectors	F
Weight (kg)	11.0
Housing Support Brackets	KH054-241

B: Bootlace
 E: Eyelet
 F: Flag Terminals with Insulators

WIRING DIAGRAM



DIRECT DRIVE BLOWERS

241MM DIAMETER • 181MM WIDTH, TIGHT HOUSING

HOUSING

G2 Galvabond®* Steel Z275

MOTOR

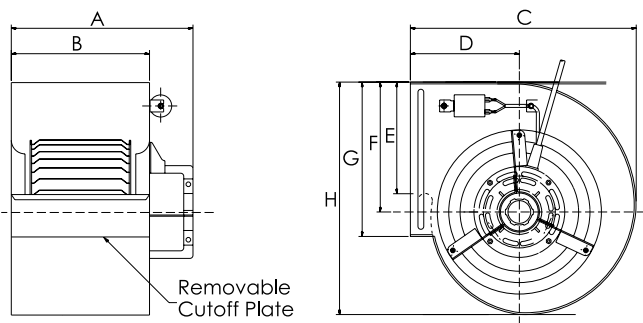
240 volts, 50Hz, 1ph C.S.R.
Class B Insulation
Automatic Thermal Overload Protection

WHEEL

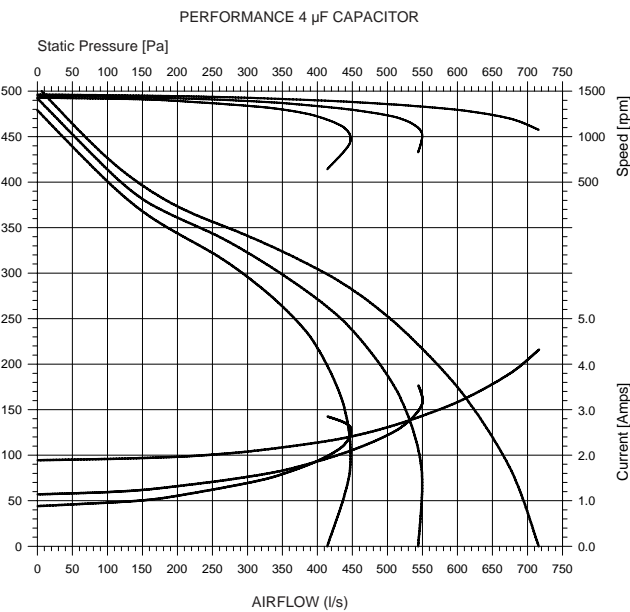
Polypropylene

DIMENSIONS

	A	B	C	D	E	F	G	H
DDG241T181-202	309	234	325	160	165	186	262	327



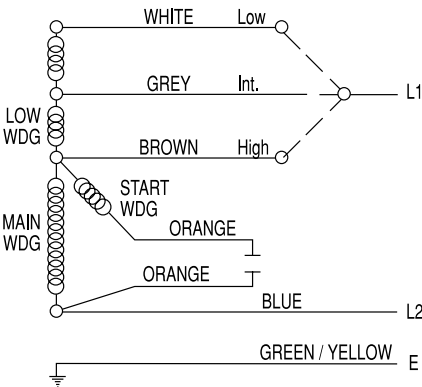
PERFORMANCE GRAPH



Motor	808555NVA-A11
Poles	4
Speeds	3
Watts Out	315
Bearings	Ball
Venting	Fully
Main Lead	1300
Connectors	B and E on earth
Capacitor Size	4 MFD
Capacitor Lead	1300
Connectors	F
Weight (kg)	11.0
Housing Support Brackets	KH054-241

B: Bootlace
E: Eyelet
F: Flag Terminals with Insulators

WIRING DIAGRAM



DIRECT DRIVE BLOWERS

241MM DIAMETER • 181MM WIDTH, TIGHT HOUSING

HOUSING

G2 Galvabond®* Steel Z275

MOTOR

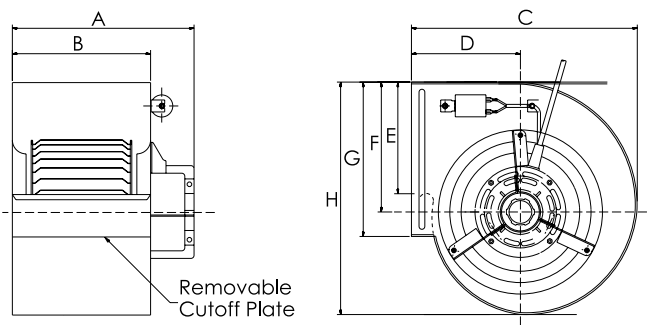
240 volts, 50Hz, 1ph C.S.R.
 Class B Insulation
 Automatic Thermal Overload Protection

WHEEL

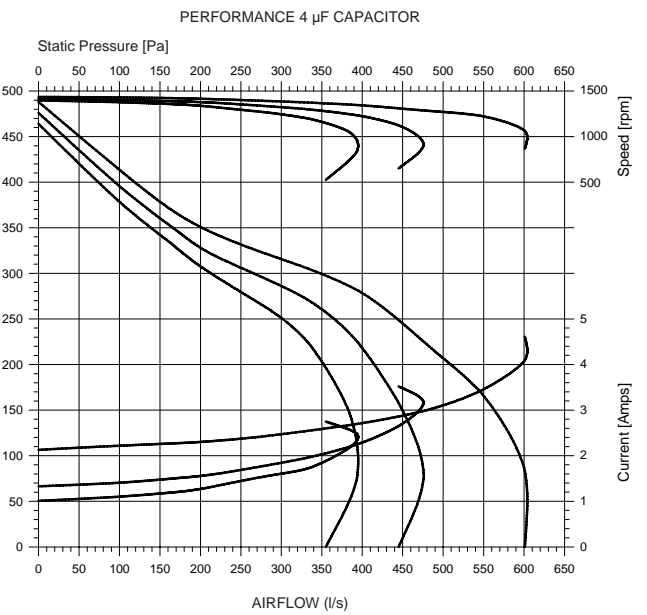
Steel

DIMENSIONS

	A	B	C	D	E	F	G	H
DDC241T181-204	309	234	325	160	160	186	262	327



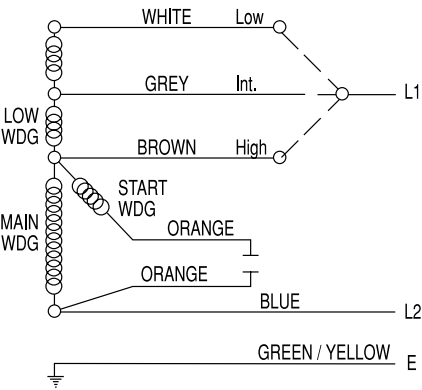
PERFORMANCE GRAPH



Motor	808555NVA-A11
Poles	4
Speeds	3
Watts Out	290
Bearings	Ball
Venting	Fully
Main Lead	1300
Connectors	B and E on earth
Capacitor Size	2 MFD
Capacitor Lead	1300
Connectors	F
Weight (kg)	11.0
Housing Support Brackets	KH054-241

B: Bootlace
 E: Eyelet
 F: Flag Terminals with Insulators

WIRING DIAGRAM



DIRECT DRIVE BLOWERS

241MM DIAMETER • 241MM WIDTH

HOUSING

G2 Galvabond®* Steel Z275

MOTOR

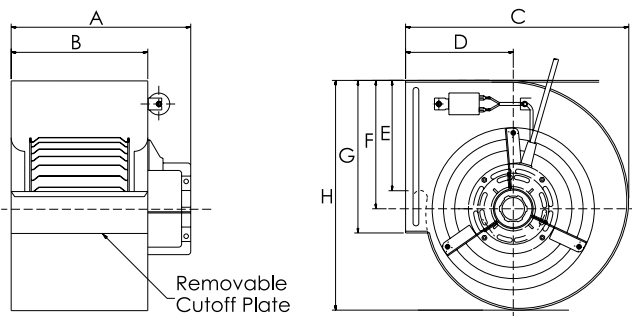
240 volts, 50Hz, 1ph C.S.R.
Class B Insulation
Automatic Thermal Overload Protection

WHEEL

Steel

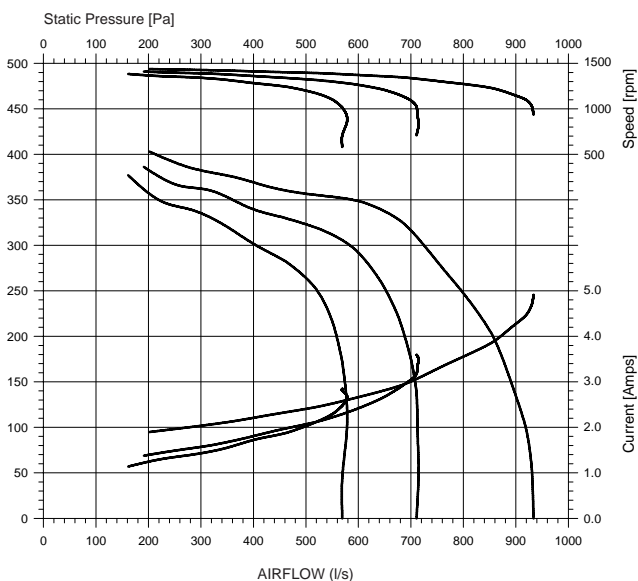
DIMENSIONS

	A	B	C	D	E	F	G	H
DDC241-241-200	350	300	380	185	185	220	262	392



PERFORMANCE GRAPH

PERFORMANCE 4 μ F CAPACITOR



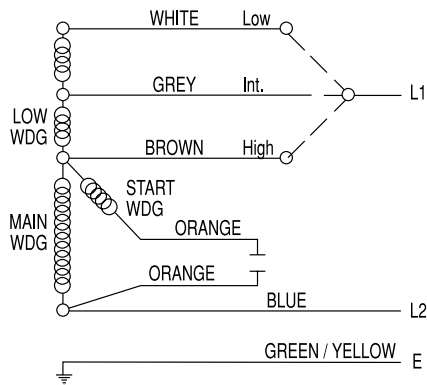
Motor	808555NVA-A11
Poles	4
Speeds	3
Watts Out	425
Bearings	Ball
Venting	Fully
Main Lead	1300
Connectors	B and E on earth
Capacitor Size	10 MFD
Capacitor Lead	1300
Connectors	F
Weight (kg)	12.5
Housing Support Brackets	KH054-241

B: Bootlace

E: Eyelet

F: Flag Terminals with Insulators

WIRING DIAGRAM



DIRECT DRIVE BLOWERS

241MM DIAMETER • 241MM WIDTH

HOUSING

G2 Galvabond®* Steel Z275

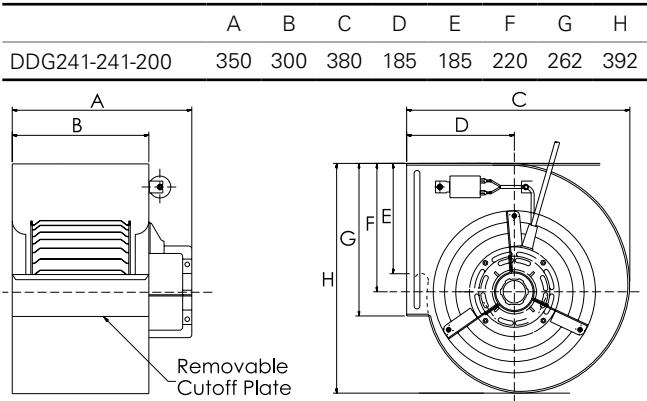
MOTOR

240 volts, 50Hz, 1ph C.S.R.
 Class B Insulation
 Automatic Thermal Overload Protection

WHEEL

Polypropylene

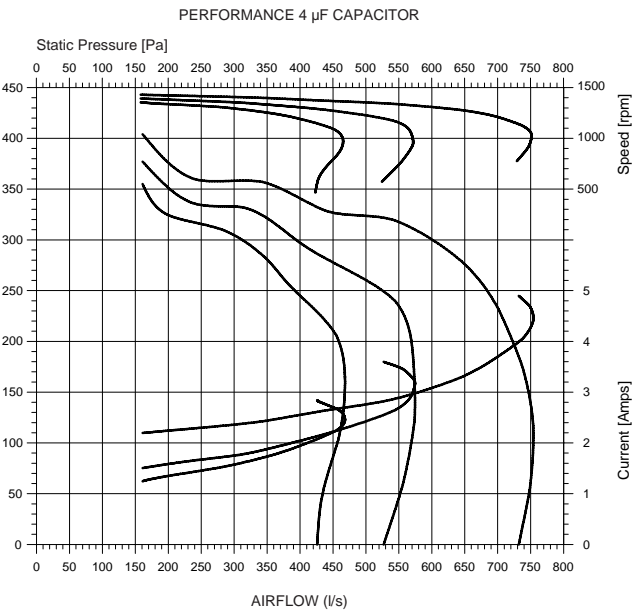
DIMENSIONS



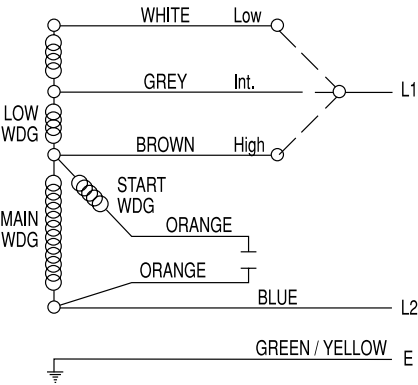
Motor	808555NVA-A11
Poles	4
Speeds	3
Watts Out	425
Bearings	Ball
Venting	Fully
Main Lead	1300
Connectors	B and E on earth
Capacitor Size	10 MFD
Capacitor Lead	1300
Connectors	F
Weight (kg)	12.5
Housing Support Brackets	KH054-241

B: Bootlace
 E: Eyelet
 F: Flag Terminals with Insulators

PERFORMANCE GRAPH



WIRING DIAGRAM



DIRECT DRIVE BLOWERS

241MM DIAMETER • 241MM WIDTH, TIGHT HOUSING

HOUSING

G2 Galvabond®* Steel Z275

MOTOR

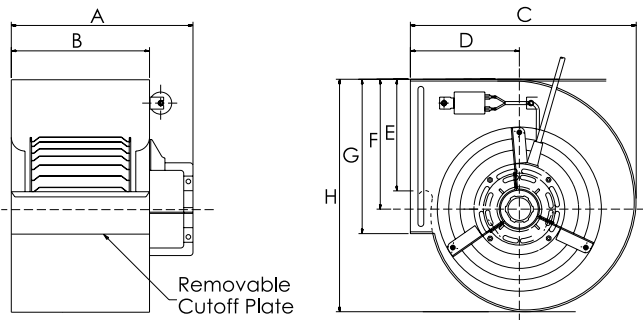
240 volts, 50Hz, 1ph C.S.R.
Class B Insulation
Automatic Thermal Overload Protection

WHEEL

Steel

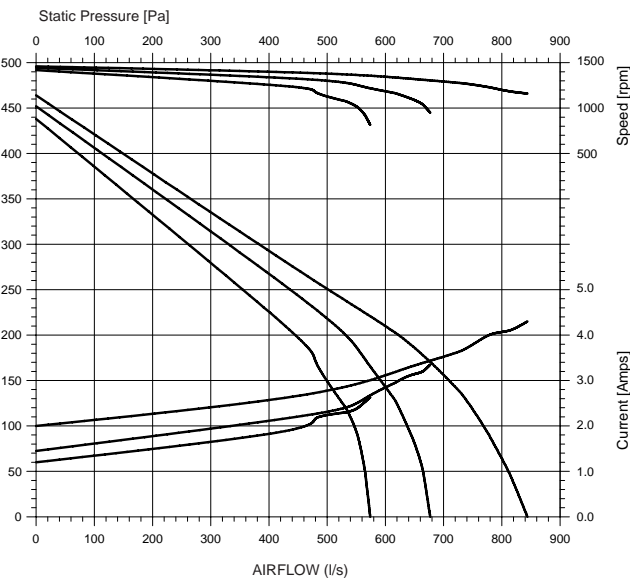
DIMENSIONS

	A	B	C	D	E	F	G	H
DDC241T241-200	350	300	324	160	165	186	262	327



PERFORMANCE GRAPH

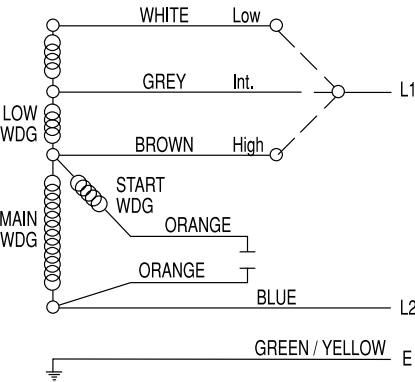
PERFORMANCE 4 µF CAPACITOR



Motor	808555NVA-A11
Poles	4
Speeds	3
Watts Out	425
Bearings	Ball
Venting	Fully
Main Lead	1300
Connectors	B and E on earth
Capacitor Size	10 MFD
Capacitor Lead	1300
Connectors	F
Weight (kg)	12.5
Housing Support Brackets	KH054-241

B: Bootlace
E: Eyelet
F: Flag Terminals with Insulators

WIRING DIAGRAM



DIRECT DRIVE BLOWERS

241MM DIAMETER • 241MM WIDTH, TIGHT HOUSING

HOUSING

G2 Galvabond®* Steel Z275

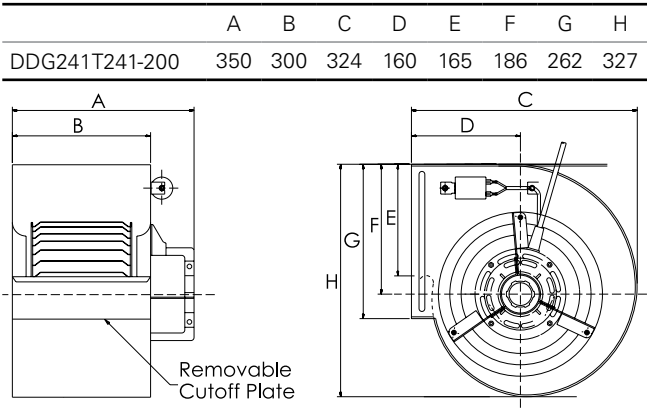
MOTOR

240 volts, 50Hz, 1ph C.S.R.
 Class B Insulation
 Automatic Thermal Overload Protection

WHEEL

Polypropylene

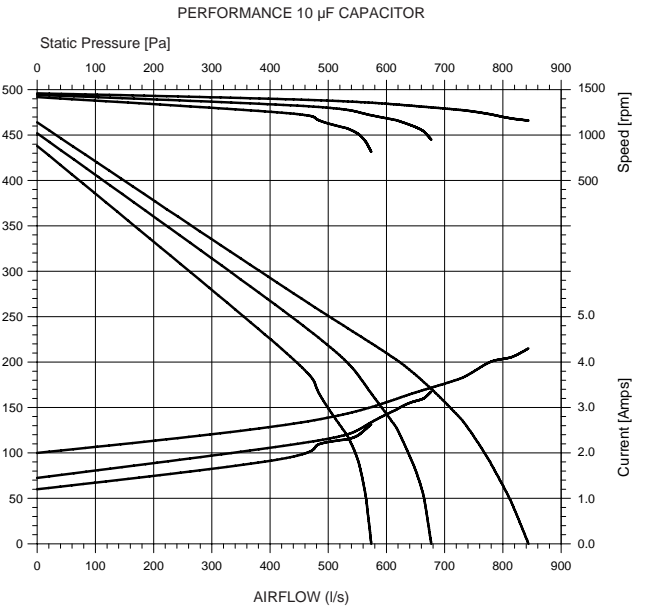
DIMENSIONS



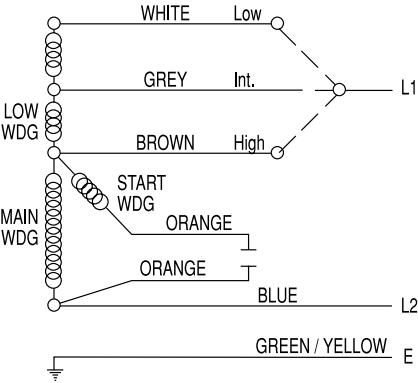
Motor	808555NVA-A11
Poles	4
Speeds	3
Watts Out	425
Bearings	Ball
Venting	Fully
Main Lead	1300
Connectors	B and E on earth
Capacitor Size	10 MFD
Capacitor Lead	1300
Connectors	F
Weight (kg)	12.5
Housing Support Brackets	KH054-241

B: Bootlace
 E: Eyelet
 F: Flag Terminals with Insulators

PERFORMANCE GRAPH



WIRING DIAGRAM



DIRECT DRIVE BLOWERS

241MM DIAMETER • 241MM WIDTH

HOUSING

G2 Galvabond®* Steel Z275

MOTOR

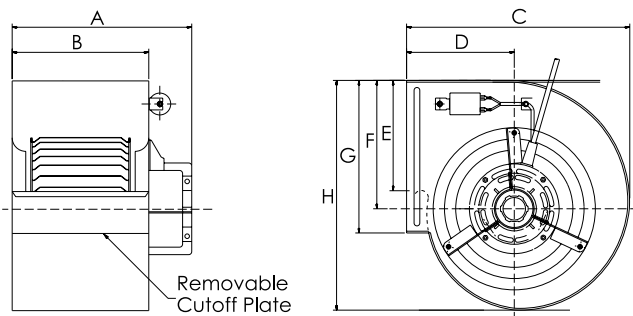
240 volts, 50Hz, 1ph C.S.R.
Class B Insulation
Automatic Thermal Overload Protection

WHEEL

Steel

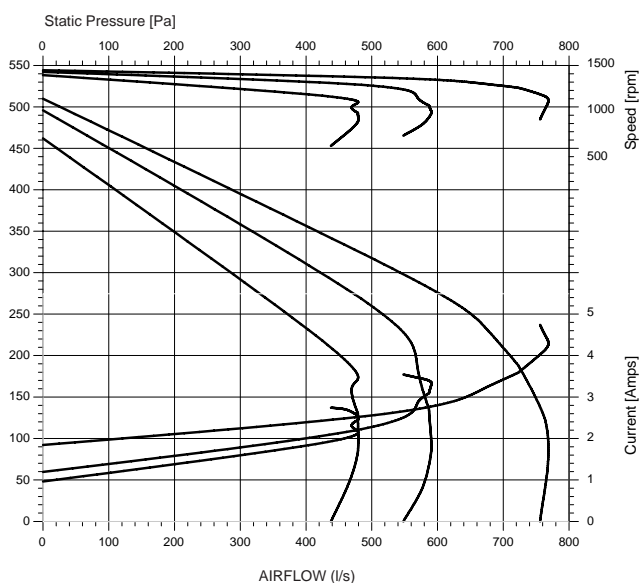
DIMENSIONS

	A	B	C	D	E	F	G	H
DDC241-241-202	350	300	380	185	185	220	262	392



PERFORMANCE GRAPH

PERFORMANCE 4 µF CAPACITOR



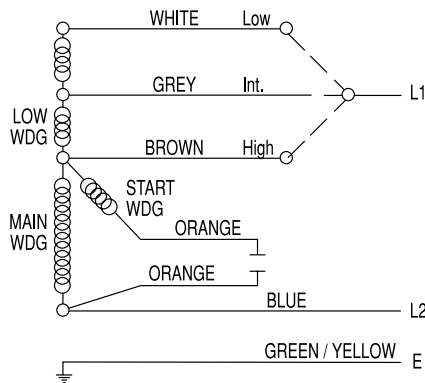
Motor	808555NVA-A11
Poles	4
Speeds	3
Watts Out	315
Bearings	Ball
Venting	Fully
Main Lead	1300
Connectors	B and E on earth
Capacitor Size	4 MFD
Capacitor Lead	1300
Connectors	F
Weight (kg)	12.5
Housing Support Brackets	KH054-241

B: Bootlace

E: Eyelet

F: Flag Terminals with Insulators

WIRING DIAGRAM



DIRECT DRIVE BLOWERS

241MM DIAMETER • 241MM WIDTH

HOUSING

G2 Galvabond®* Steel Z275

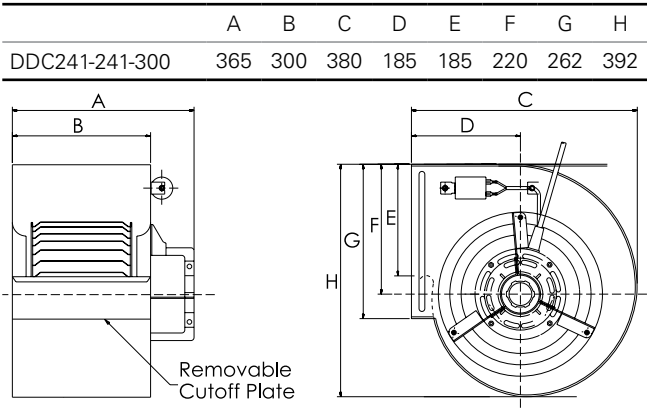
MOTOR

240 volts, 50Hz, 1ph C.S.R.
 Class B Insulation
 Automatic Thermal Overload Protection

WHEEL

Steel

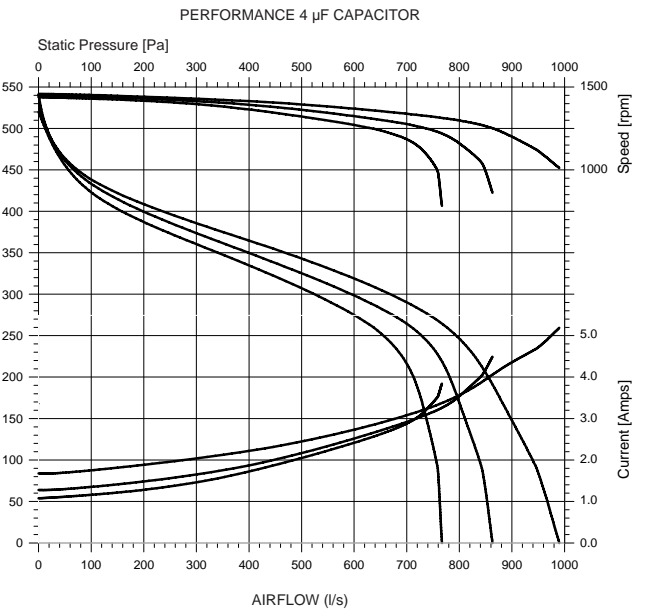
DIMENSIONS



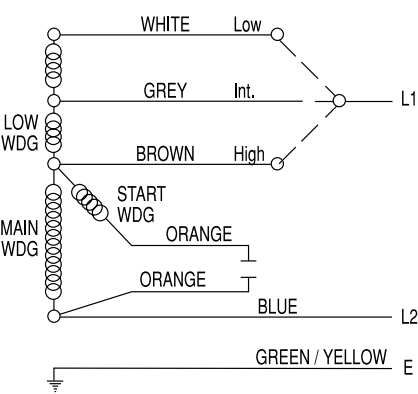
Motor	8061S082-17
Poles	4
Speeds	3
Watts Out	600
Bearings	Ball
Venting	Fully
Main Lead	1300
Connectors	B and E on earth
Capacitor Size	15 MFD
Capacitor Lead	1300
Connectors	F
Weight (kg)	14.5
Housing Support Brackets	KH054-241

B: Bootlace
 E: Eyelet
 F: Flag Terminals with Insulators

PERFORMANCE GRAPH



WIRING DIAGRAM



DIRECT DRIVE BLOWERS

241MM DIAMETER • 241MM WIDTH

HOUSING

G2 Galvabond®* Steel Z275

MOTOR

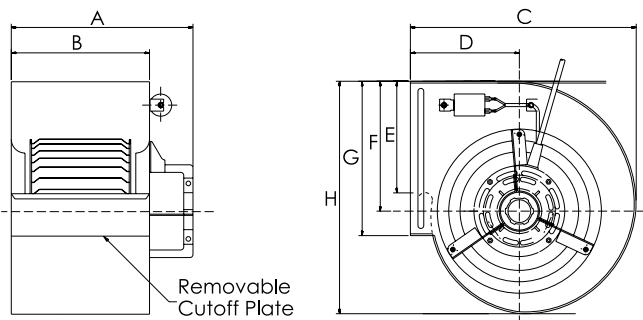
240 volts, 50Hz, 1ph C.S.R.
Class B Insulation
Automatic Thermal Overload Protection

WHEEL

Polypropylene

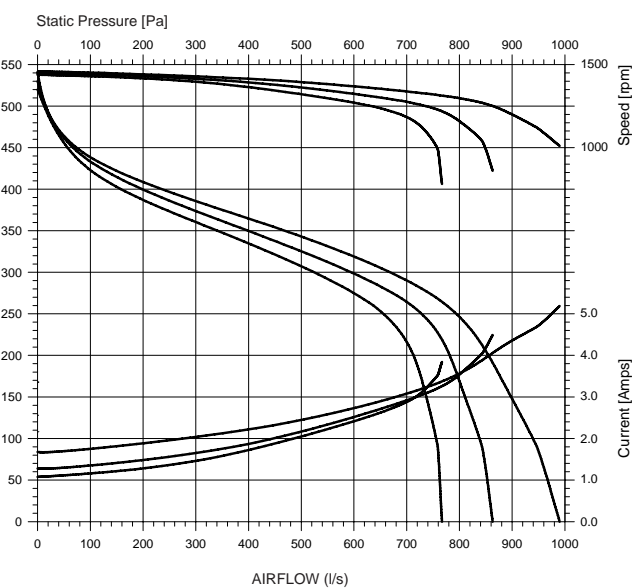
DIMENSIONS

	A	B	C	D	E	F	G	H
DDG241-241-300	365	300	380	185	185	220	262	392



PERFORMANCE GRAPH

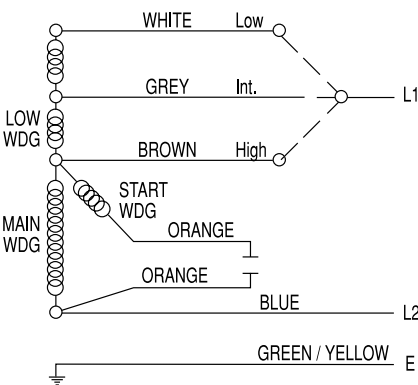
PERFORMANCE 10 µF CAPACITOR



Motor	8061S082-17
Poles	4
Speeds	3
Watts Out	600
Bearings	Ball
Venting	Fully
Main Lead	1300
Connectors	B and E on earth
Capacitor Size	15 MFD
Capacitor Lead	1300
Connectors	F
Weight (kg)	14.5
Housing Support Brackets	KH054-241

B: Bootlace
E: Eyelet
F: Flag Terminals with Insulators

WIRING DIAGRAM



DIRECT DRIVE BLOWERS

241MM DIAMETER • 241MM WIDTH, TIGHT HOUSING

HOUSING

G2 Galvabond®* Steel Z275

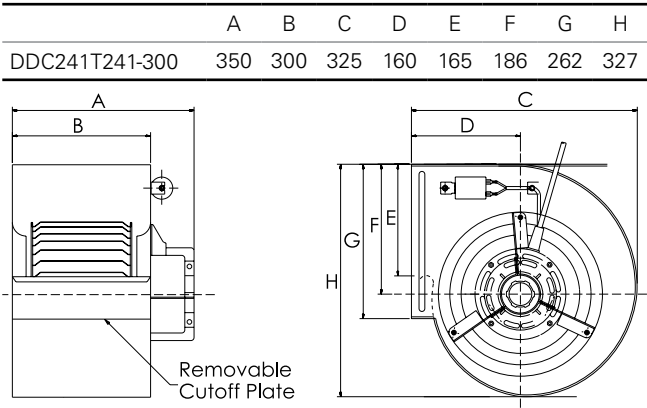
MOTOR

240 volts, 50Hz, 1ph C.S.R.
 Class B Insulation
 Automatic Thermal Overload Protection

WHEEL

Steel

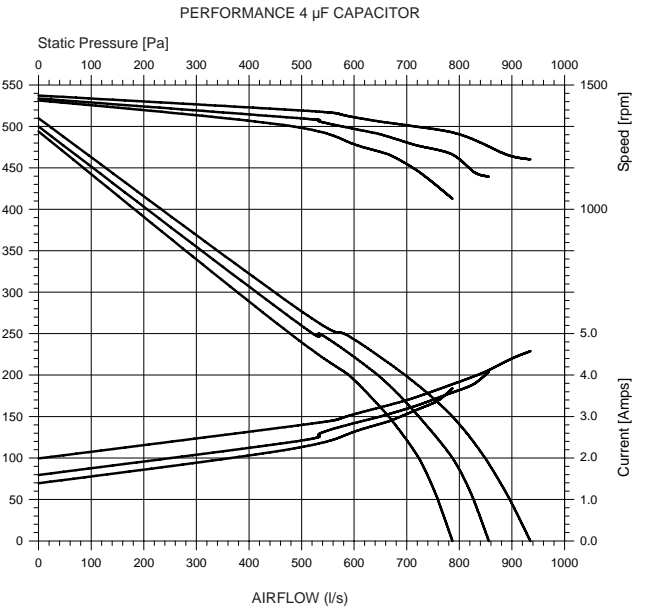
DIMENSIONS



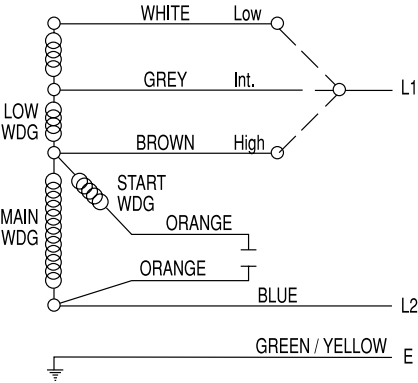
Motor	8061S082-17
Poles	4
Speeds	3
Watts Out	600
Bearings	Ball
Venting	Fully
Main Lead	1300
Connectors	B and E on earth
Capacitor Size	15 MFD
Capacitor Lead	1300
Connectors	F
Weight (kg)	14.5
Housing Support Brackets	KH054-241

B: Bootlace
 E: Eyelet
 F: Flag Terminals with Insulators

PERFORMANCE GRAPH



WIRING DIAGRAM



DIRECT DRIVE BLOWERS

241MM DIAMETER • 241MM WIDTH, TIGHT HOUSING

HOUSING

G2 Galvabond®* Steel Z275

MOTOR

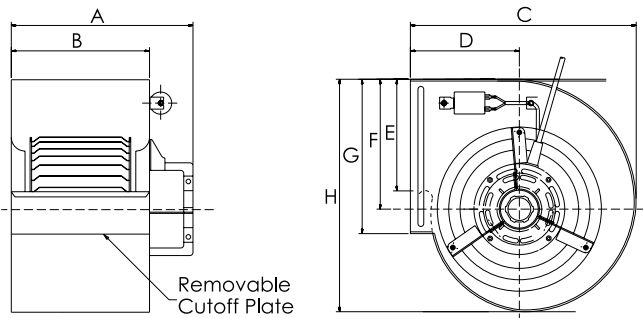
240 volts, 50Hz, 1ph C.S.R.
Class B Insulation
Automatic Thermal Overload Protection

WHEEL

Polypropylene

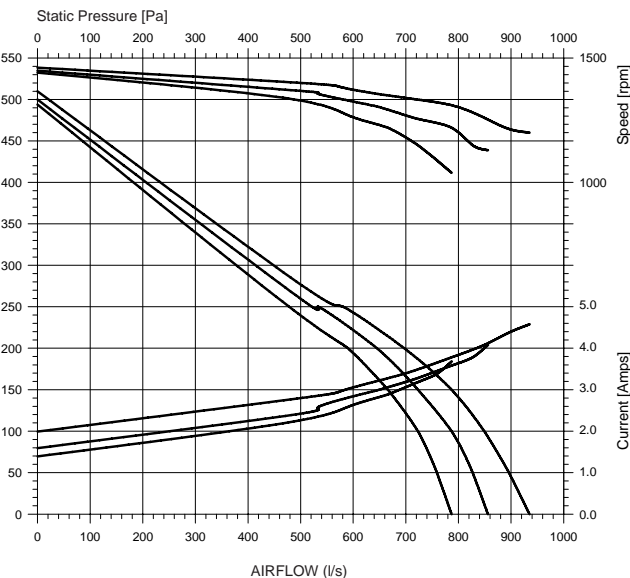
DIMENSIONS

	A	B	C	D	E	F	G	H
DDG241T241-300	365	300	325	160	165	186	262	327



PERFORMANCE GRAPH

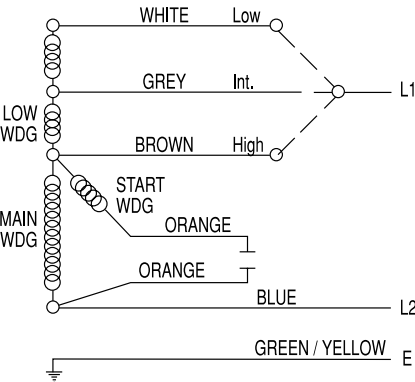
PERFORMANCE 4 µF CAPACITOR



Motor	8061S082-17
Poles	4
Speeds	3
Watts Out	600
Bearings	Ball
Venting	Fully
Main Lead	1300
Connectors	B and E on earth
Capacitor Size	15 MFD
Capacitor Lead	1300
Connectors	F
Weight (kg)	12.5
Housing Support Brackets	KH054-241

B: Bootlace
E: Eyelet
F: Flag Terminals with Insulators

WIRING DIAGRAM



DIRECT DRIVE BLOWERS

270MM DIAMETER • 270MM WIDTH

HOUSING

G2 Galvabond®* Steel Z275

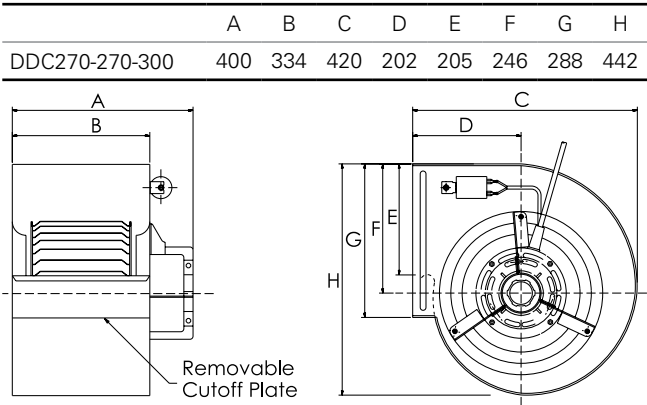
MOTOR

240 volts, 50Hz, 1ph C.S.R.
 Class B Insulation
 Automatic Thermal Overload Protection

WHEEL

Steel

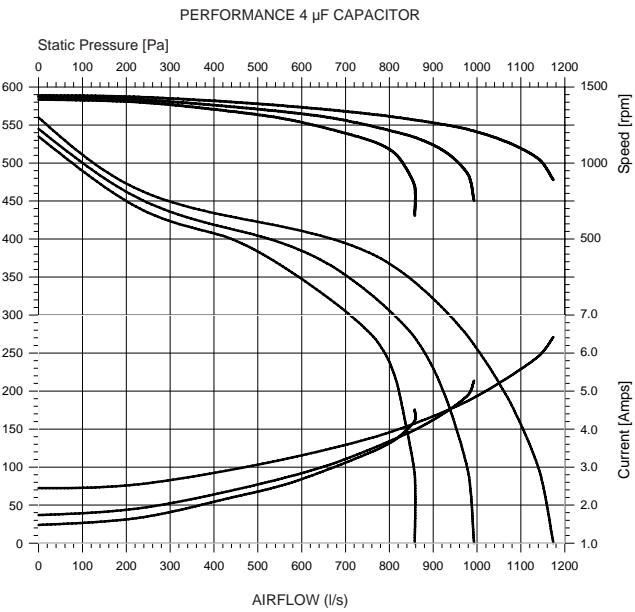
DIMENSIONS



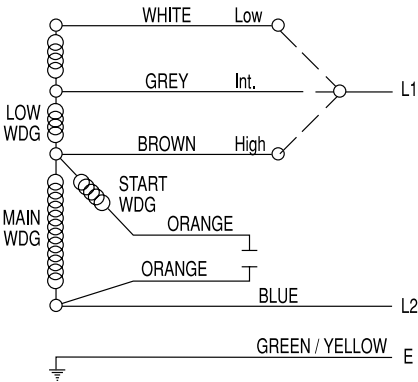
Motor	8061S082-17
Poles	4
Speeds	3
Watts Out	600
Bearings	Ball
Venting	Fully
Main Lead	1300
Connectors	B and E on earth
Capacitor Size	15 MFD
Capacitor Lead	1300
Connectors	F
Weight (kg)	15.5

B: Bootlace
 E: Eyelet
 F: Flag Terminals with Insulators

PERFORMANCE GRAPH



WIRING DIAGRAM



DIRECT DRIVE BLOWERS

270MM DIAMETER • 270MM WIDTH

HOUSING

G2 Galvabond®* Steel Z275

MOTOR

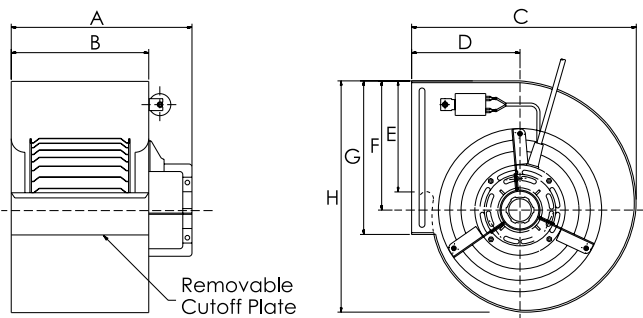
240 volts, 50Hz, 1ph C.S.R.
Class B Insulation
Automatic Thermal Overload Protection

WHEEL

Polypropylene

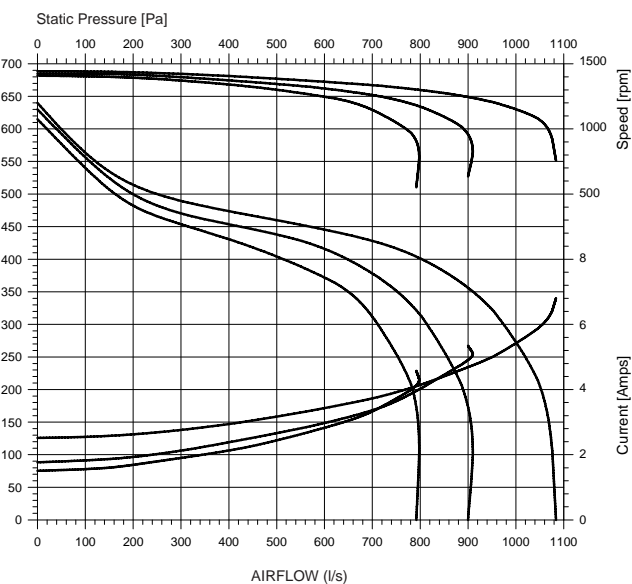
DIMENSIONS

	A	B	C	D	E	F	G	H
DDG270-270-300	400	334	420	202	205	246	288	442



PERFORMANCE GRAPH

PERFORMANCE 4 µF CAPACITOR



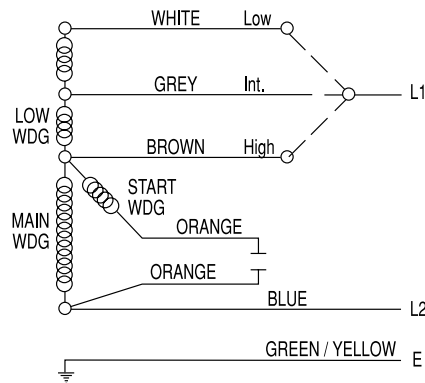
Motor	8061S082-17
Poles	4
Speeds	3
Watts Out	600
Bearings	Ball
Venting	Fully
Main Lead	1300
Connectors	B and E on earth
Capacitor Size	15 MFD
Capacitor Lead	1300
Connectors	F
Weight (kg)	15.5

B: Bootlace

E: Eyelet

F: Flag Terminals with Insulators

WIRING DIAGRAM



DIRECT DRIVE BLOWERS

270MM DIAMETER • 270MM WIDTH

HOUSING

G2 Galvabond®* Steel Z275

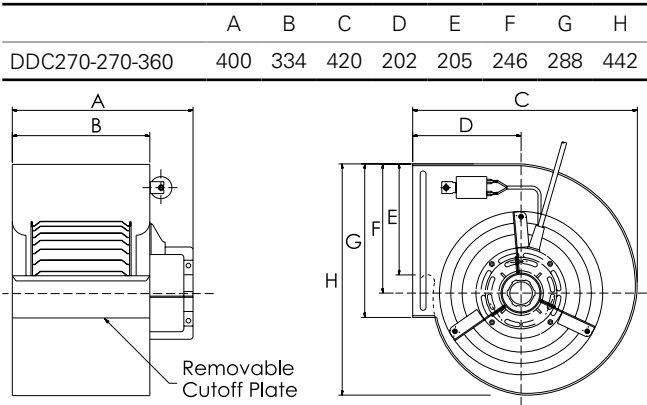
MOTOR

240 volts, 50Hz, 1ph C.S.R.
 Class B Insulation
 Automatic Thermal Overload Protection

WHEEL

Steel

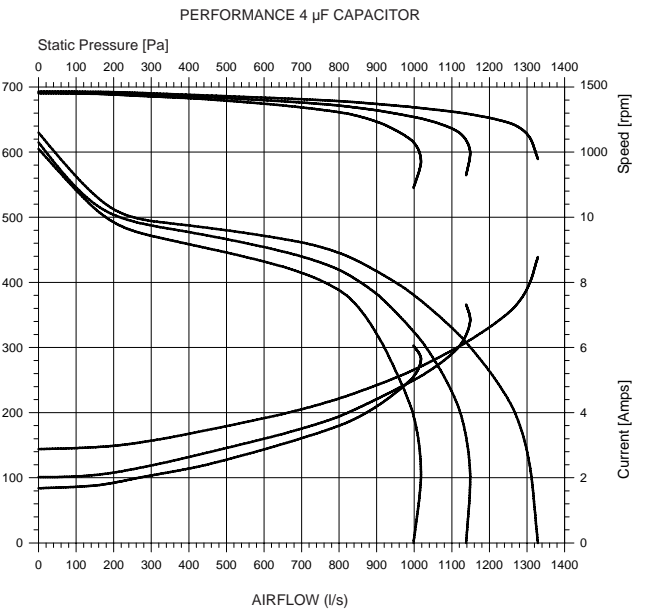
DIMENSIONS



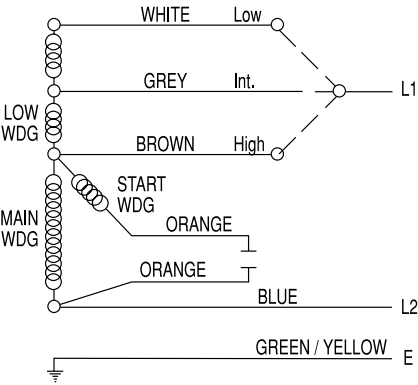
Motor	8061S128-03
Poles	4
Speeds	3
Watts Out	750
Bearings	Ball
Venting	Fully
Main Lead	1000
Connectors	B and E on earth
Capacitor Size	20 MFD
Capacitor Lead	1000
Connectors	F
Weight (kg)	16.0
Housing Support Brackets	KH054-270

B: Bootlace
 E: Eyelet
 F: Flag Terminals with Insulators

PERFORMANCE GRAPH



WIRING DIAGRAM



DIRECT DRIVE BLOWERS

270MM DIAMETER • 270MM WIDTH

HOUSING

G2 Galvabond®* Steel Z275

MOTOR

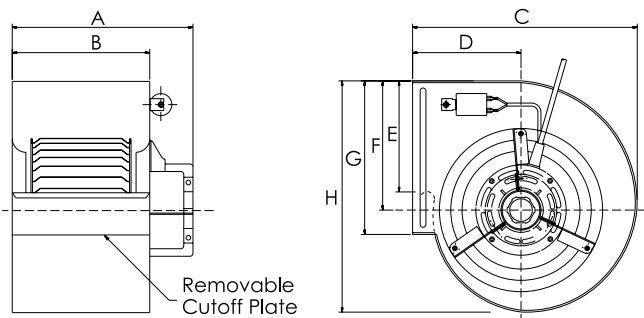
240 volts, 50Hz, 1ph C.S.R.
Class B Insulation
Automatic Thermal Overload Protection

WHEEL

Polypropylene

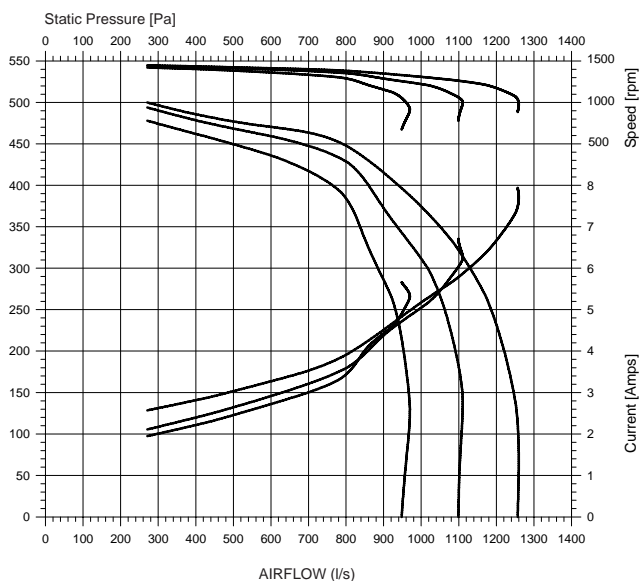
DIMENSIONS

	A	B	C	D	E	F	G	H
DDG270-270-360	400	334	420	202	205	246	288	442



PERFORMANCE GRAPH

PERFORMANCE 4 µF CAPACITOR



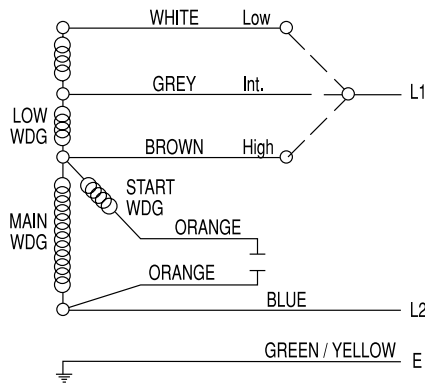
Motor	8061S128-03
Poles	4
Speeds	3
Watts Out	750
Bearings	Ball
Venting	Fully
Main Lead	1000
Connectors	B and E on earth
Capacitor Size	20 MFD
Capacitor Lead	1000
Connectors	F
Weight (kg)	16.0
Housing Support Brackets	KH054-270

B: Bootlace

E: Eyelet

F: Flag Terminals with Insulators

WIRING DIAGRAM



Regal Beloit Australia Pty Ltd ABN 61 122 303 084

19 Corporate Ave (PO Box 2340)

Rowville VIC 3178, AUSTRALIA

Customer Service: 1300 888 853

Fax: +61 3 9237 4050

www.regalaustralia.com.au

VICTORIA / HEAD OFFICE

19 Corporate Avenue

Rowville VIC 3178

T: 1300 888 853

F: +61 3 9237 4050

NEW SOUTH WALES

8 Bushells Place

Wetherill Park NSW 2164

T: 1300 888 853

F: +61 2 8781 3131

QUEENSLAND

7 Mahogany Court

Willawong QLD 4110

T: 1300 888 853

F: +61 7 3246 3210

CAIRNS (Service • Repairs • Sales)

2/159-161 Newell Street

Bungalow QLD 4870

T: 1300 888 853

F: +61 7 4033 5553

MACKAY

Shed 5/58 Elvin Street

Paget QLD 4740

T: 1300 888 853

F: +61 7 4952 6277

SOUTH AUSTRALIA

47 Research Road

Pooraka SA 5095

T: 1300 888 853

F: +61 8 8359 5675

WESTERN AUSTRALIA

21 Colin Jamieson Drive

Welshpool WA 6106

T: 1300 888 853

F: +61 8 6253 3710

NEW ZEALAND

Regal Beloit New Zealand Ltd

AUCKLAND

18 Jomac Place

Avondale

T: 0800 676 722

F: +64 9 820 8504

ROTORUA

91 Tallyho Street

Rotorua

T: 0800 676 722

F: +64 7 347 8629

MALAYSIA

Torin Industries SND BHD (MALAYSIA)

No. 6536A Jalan Bukit Kemuning

Batu 6 Seksyen 34

40470 Shah Alam Selangor

T: +60 3 5124 6157

F: +60 3 5121 1467

SINGAPORE

Regal Beloit South East Asia Pte. Ltd.

12 Tuas Loop 637346

SINGAPORE

T: +65 6863 3473

F: +65 6863 3476

THAILAND

FASCO Motors (Thailand) Limited

29/7-8 Bangkruay-Sainoi Road

Bangkrang

Muang Nonthaburi District Nonthaburi 11000

THAILAND

T: +66 2447 3300

F: +66 2447 3500

APPLICATION CONSIDERATIONS

The proper selection and application of air system products and components, including the related area of product safety, is the responsibility of the customer. Operating and performance requirements and potential associated issues will vary appreciably depending upon the use and application of such products and components. The scope of the technical and application information included in this publication is necessarily limited. Unusual operating environments and conditions, lubrication requirements, loading supports, and other factors can materially affect the application and operating results of the products and components and the customer should carefully review its requirements. Any technical advice or review furnished by Regal Beloit Australia Pty Ltd and its affiliates with respect to the use of products and components is given in good faith and without charge, and Regal assumes no obligation or liability for the advice given, or results obtained, all such advice and review being given and accepted at customer's risk.

For a copy of our Standard Terms and Conditions of Sale, Disclaimers of Warranty and Limitation of Liability, please contact Customer Service at 1300 888 853 or visit www.regalaustralia.com.au. These terms and conditions of sale, disclaimers and limitations of liability apply to any person who may buy, acquire or use a Regal Beloit Australia Pty Ltd product referred to herein, including any person who buys from a licensed distributor of these branded products.

Regal and Genteq are trademarks of Regal Beloit Corporation or one of its affiliated companies.

*Galvabond is believed to be the trademark or tradename of Bluescope Steel Limited and is not controlled by Regal Beloit Corporation.

©2017 Regal Beloit Australia Pty Ltd, All Rights Reserved. MCC16076E • G0009 • r8 • Created in AU

REGAL®